

Green Future Fund

Managed by **Charlie Thomas**
and **Tom Fitzgerald**



The Green Revolution

The transformation needed to address the world's most pressing environmental challenges will result in a seismic change to the way we live, the way we consume and the way companies operate. It will redefine business models, economies and innovation.

We call this critical time the Green Revolution and it has already commenced.

The **EdenTree Green Future Fund** aims to capture the long-term opportunities at the heart of the Green Revolution. It does this by investing in the innovative companies that are providing solutions to the planet's environmental challenges. The team believes this multi-trillion-dollar value creation opportunity will transcend sectors, geographies and market capitalisation, with the greatest opportunity set presiding in the small and mid-cap global equity universe.

The Fund's unconstrained, blended approach combines the best value and growth opportunities worldwide, with the core focus being on identifying those companies that will provide the greatest upside potential over the long term, as well as delivering a positive environmental impact.

Fund Overview

The EdenTree Green Future Fund aims to invest in companies which at the core of their business provide sustainable solutions to the world's environmental challenges, while also seeking to provide long term capital growth over 5 years or more with an income.

Investment Focus: Global All Countries

Investment Horizon: Typically 5-7 years

Fund Style: A mid-cap global equities bias with a blend of value and growth

Approach: Negative screening focused on sustainable environmental solutions

Portfolio Construction: 40-60 holdings with an unconstrained approach

Benchmark comparator: IA Global Sector and MSCI ACWI TR








Investment Process

Multi-Thematic Investment Framework

The Fund’s investment framework is centred around seven key themes which the team believes represent the best investment opportunities presented by the Green Revolution.

This will help identify those companies actively addressing environmental challenges and also have the ability to deliver high returns on capital over time.

The Framework

Theme	 Alternative Energy	 Energy Efficiency	 Circular Economy	 Environmental Services	 Water Management	 Future Mobility	 Regenerative Agriculture
Description	Generation, storage and distribution of clean energy	Enabling a low carbon transition	Solutions for sustainable materials and resource stewardship	Pollution control, testing and impact management	Conservation and management	Technologies and services enabling sustainable transportation	Sustainable food production
Solutions	<ul style="list-style-type: none"> • Renewables • Renewable energy developers • Energy storage • Renewable Energy Infrastructure 	<ul style="list-style-type: none"> • Industrial energy efficiency • Power networks efficiency • Consumer energy efficiency • Cloud Computing 	<ul style="list-style-type: none"> • Waste technology • Recycling and value added waste processing • Hazardous waste 	<ul style="list-style-type: none"> • Environmental Consultants • Pollution Technology • Testing and measurement • Safety 	<ul style="list-style-type: none"> • Water Infrastructure • Water Efficiency • Water Treatment 	<ul style="list-style-type: none"> • Electric Vehicles • Autonomous Mobility • Public Transport • Charging Infrastructure 	<ul style="list-style-type: none"> • Regenerative agriculture • Food Supply Chain • Nutrition

Dynamic, Disciplined and Repeatable Investment Process

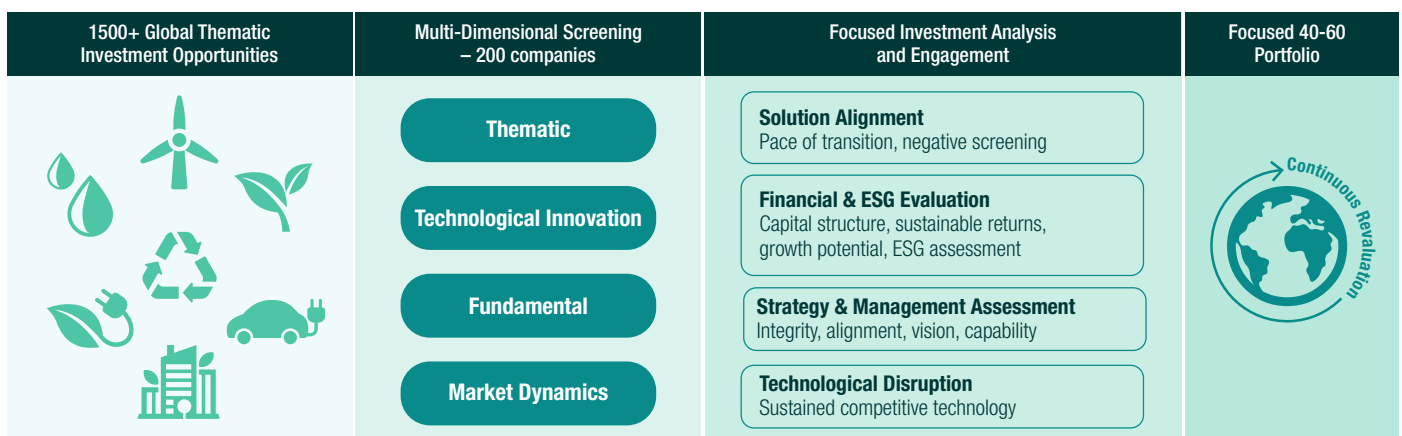
The investment process has been built, refined and applied over several decades of manager experience in environmental investing. The team believes a combination of top-down and bottom-up proprietary research will generate differentiated conclusions on the quality and long-term performance prospects of the companies within their investment universe.

The Green Future investment universe comprises around 1,500 companies worldwide, that are already making an active contribution to the environmental value chain as well as having a low environmental impact. This number is growing as more

and more companies seek to address the world’s significant environmental challenges.

They focus on those companies that rank highly in terms of thematic alignment, growth prospects, managerial commitment and valuation as they believe these are enduring qualities over the long term, particularly within the context of ESG performance.

The universe is then refined down to a more focused list of 200 companies from which the managers build a portfolio of high conviction ideas. They then follow these companies closely and seek to understand the nuances of their business processes.



Our differentiated ESG approach

The team’s ESG approach is different to most traditional ESG investment models. While incorporating negative screening to avoid companies whose activities are harmful to society, the outcomes of a positive screen are utilised to ensure all potential investments are dedicated to the provision of environmental solutions.

Additionally, rather than purely outsourcing ESG research to an independent team, the co-managers conduct their own desk-based research and work alongside EdenTree’s Responsible

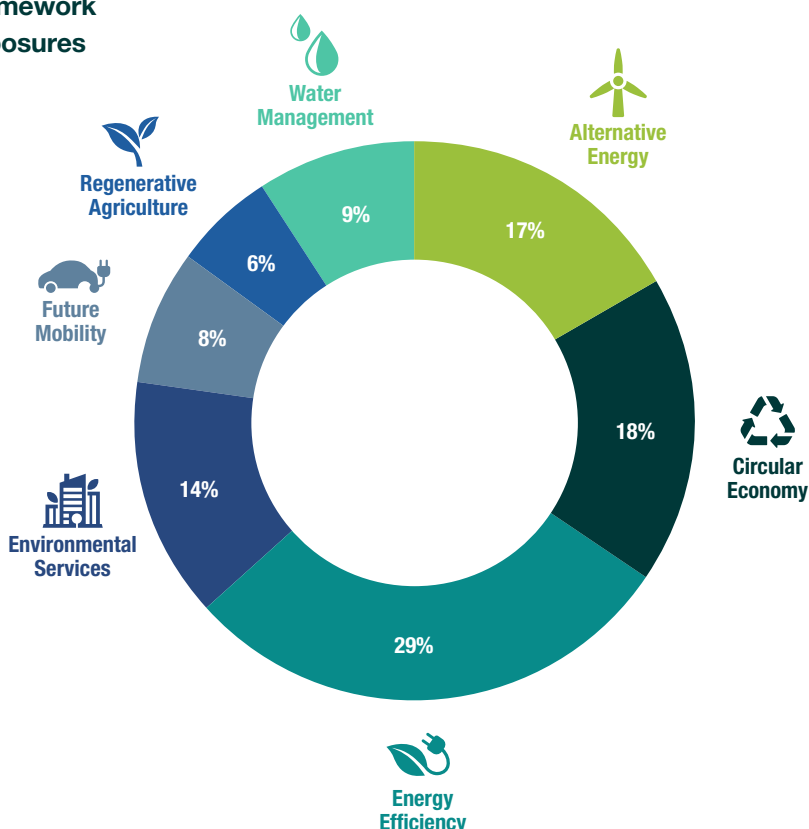
Investment team to ensure that ESG is truly embedded within their investment process.

They also undertake their own engagement with businesses to gain a better understanding of how they operate and achieve insight into their long-term risks and opportunities.

Their engagement philosophy is to be active investors meaning they seek to establish positive, collaborative relationships with companies over the long term.

Due diligence	Assessment	Approach	Outcomes / Transparency
<ul style="list-style-type: none"> Business Ethics Corporate Governance Community Employment & Labour Environment & Climate Change Human Rights 	<ul style="list-style-type: none"> Research Engagement Governance 	<ul style="list-style-type: none"> Desk-based research Industry specific expertise Continuous collaboration with EdenTree RI team Primary research driven rather than 3rd party Reputational evaluation Direct engagement with executive management and non-executive management Engagement through industry collaboration Voting aligned with active management 	<ul style="list-style-type: none"> Annual Impact Report Engagement and Voting Reporting Research and sector insights Incorporating ESG into investment valuation

Framework Exposures



Carbon Footprint

The Fund also provides transparency on the environmental footprint of the Fund through periodic reporting to investors. This reporting provides both quantitative and qualitative assessments on how investee companies are achieving environmental targets and developing solutions to address the world’s environmental challenges.

The Edentree Team

A highly experienced sustainability-orientated investment team

The Green Future Fund is led by two very experienced Global Equity fund managers. Our co-managers, Charlie Thomas and Tom Fitzgerald, both have a strong pedigree of managing environmental assets, meaning their combined skill set presents a powerful and authentic track record of responsible and sustainable investing.

Charlie and Tom can also harness the diverse skills and experience of Edentree's wider equity and fixed income investment managers and dedicated responsible investment team, share research insights, generate ideas and analyse opportunities.



Charlie Thomas
Chief Investment Officer
and Global Equity Fund Manager

Charlie joined Edentree in June 2021 as CIO and has responsibility for the Investment Team. Charlie is also Co-Manager of the

Edentree Green Future Fund, launched in 2022 and has more than two decades of investment management experience, most recently as Head of Strategy, Environment and Sustainability at Jupiter Asset Management where he also managed the Jupiter Ecology Fund for nearly two decades. Charlie holds a Masters in Environmental Technology from Imperial College London.



Tom Fitzgerald
Global Equity
Fund Manager

Tom joined Edentree in 2011 and has been co-manager of the Responsible and Sustainable Global Equity Fund since

August 2018 and also co-manages the firm's "Sustainable Global Equities for a Just Transition" segregated strategies. He joined the investment team as a Research Analyst where his primary responsibilities centred on global equity analysis, focusing in particular on the global Technology sector. Tom graduated with a BSc (Hons) in Economics and Business Management from Oxford Brookes University and holds the CFA Certificate in ESG Investing.

Why Edentree?

Edentree is the original responsible investment house having launched one of the first ethical equity funds in the UK back in March 1988. For us, responsible investment is not a fad, but a long-term dedication to performance with principles.

Investors increasingly want their investment portfolios to make a difference and have a positive impact on society and the environment around them. At Edentree we applaud this alignment of investment with values. After all, as pioneers in responsible and sustainable investing, our strategy for over 35 years has been to invest for the long-term to create a better world for tomorrow.

For additional information on the Green Future Fund, please contact your Edentree relationship manager, or get in touch with us at:



0800 011 3821



ifa@edentreeim.com



[edentreeim.com](https://www.edentreeim.com)



Proudly part of the **BENEFACT GROUP** 

The value of an investment and the income from it can fall as well as rise as a result of market and currency fluctuations, you may not get back the amount originally invested. Past performance should not be seen as a guide to future performance. If you are unsure which investment is most suited for you, the advice of a qualified financial adviser should be sought. Edentree Investment Management Limited (Edentree) Reg. No. 2519319. Registered in England at Benefact House, 2000, Pioneer Avenue, Gloucester Business Park, Brockworth, Gloucester, GL3 4AW, United Kingdom. Edentree is authorised and regulated by the Financial Conduct Authority and is a member of the Investment Association. Firm Reference Number 527473. MKT000260 3/24.