



Purely.
Principles.
Performance.

Leading the way in Responsible
and Sustainable investing





Performance
with principles®



Leading the way in Responsible and Sustainable investing

We launched one of the first ethical equity funds in the UK in March 1988, marking the start of a long-term commitment to Performance with Principles.

For us, responsible stewardship means we have a duty to help clients align their investments with their values. Supported by in-depth analysis and oversight from our Responsible Investment team, we carefully assess the social and environment impact of each of our funds.

We exclude fossil fuels, defence, tobacco and other harmful sectors. And we clearly communicate each fund's objectives and the Responsible and Sustainable approach we take to investing in equities, fixed income and listed infrastructure. In short, our funds invest precisely the way we say they do. As a fund house, we seek to have an outsized influence on our local community, wider society and the environment through our approach to investing, voting and engagement.

We are charity owned – a unique ownership structure that ensures we are working towards goals shared by our clients and society more broadly.

Our commitment to Responsible and Sustainable investing is more than 35 years old, but our pioneering spirit remains as fresh as day one.

We are proud to have been awarded the Moneyfacts 'Best Ethical Investment Provider' award every year since 2009 - an award voted for by the adviser community, that recognises our strong long-term performance and commitment to client service.



BENEFACT GROUP

EdenTree are part of the Benefact Group, a family of specialist financial services businesses, which gives all of its available profits to charity and good causes. The Benefact Group is the fourth largest corporate donor to good causes, having given over £200m in charitable donations.



So by doing business with us, not only will you continue to benefit from Responsible and Sustainable investment that's dedicated to providing performance with principles, you will also be contributing to our wider movement for good, where our profits go to good causes to help transform lives and communities.

What we offer our clients:

We are an investment manager with £3.6bn¹ of assets under management, who believes that consistent, long-term returns are more likely to be achieved by investing responsibly in sustainable businesses.

An expert team

Serving the wholesale, institutional, charity and retail market – our investment team has some of the longest continuous track records of any in the UK.

Performance with principles

Our fund managers and Responsible Investment team work side by side to generate ideas, analyse opportunities, create meaningful and diversified portfolios and undertake ongoing evaluation.

Our responsible and sustainable approach

We fully integrate Environmental, Social and Governance (ESG) factors across our investment process. This integrated approach covers four key areas: screening, engagement, governance and thought-leading research.

I am very excited for the future of EdenTree. As a pioneer of ethical investment since the late 1980s we have the expertise and authenticity to deliver innovative and market leading solutions to investors, whilst providing high levels of service and support to our clients.



Andy Clark
Chief Executive Officer

¹ Source: EdenTree September 2023



Research

EdenTree's market research draws on an unrivalled depth of expertise that has been built over three decades. Our responsible investment team regularly publish expert opinion pieces, which help to inform our clients and drive idea generation within our investment team.

Our fund managers regularly provide their views on a range of industry topics, from macro-economic viewpoints through to individual stock ideas, and how they are finding opportunities that align with our Responsible and Sustainable investment approach.



Engagement

Our integrated stewardship approach includes engagement on a range of environmental, social and governance issues. We believe that the way we engage with businesses enables us to make sound, responsible investment decisions and to act as a catalyst for change.

We form constructive relationships with companies we are considering investing in and we continue to engage with them after we have invested as part of our monitoring programme.

We also engage collaboratively with other investors on issues where there is common cause, and work collectively with investors through the Principles for Responsible Investment.



Governance

We believe that shareholders have a vital role to play in encouraging high standards of corporate governance. We therefore seek to vote at all UK company meetings in which we have a shareholding, and have appointed Glass Lewis & Co. as our proxy advisory service for overseas governance and voting.

As long-term investors, we believe a pragmatic approach best fulfils the objective of building shareholder value over time. We will seek to engage pro-actively with companies where either existing corporate governance arrangements or management proposals cause concern.



Screening

Our Responsible and Sustainable screening captures the quality and strength of a company's approach to sustainable business practices. This includes assessing a diverse range of indicators including environment and climate change, conflict minerals, custody of supply in raw materials sourcing (e.g. timber) and pollution.

For example, when assessing corporate sustainability as it relates to climate change, we analyse key indicators such as emissions disclosure; how targets are set and whether they are science based and ambitious enough; and whether the company is providing solutions that support climate resilience, mitigation and/or adaptation.





We invest with integrity

Our Responsible and Sustainable investment approach focuses on achieving capital preservation with an emphasis on absolute returns over relative performance. We seek to identify intrinsically sound companies with proven business models. We combine strong conviction with a long-term view, minimising market timing risk and the low turnover of stocks to reduce trading costs.

Our philosophy

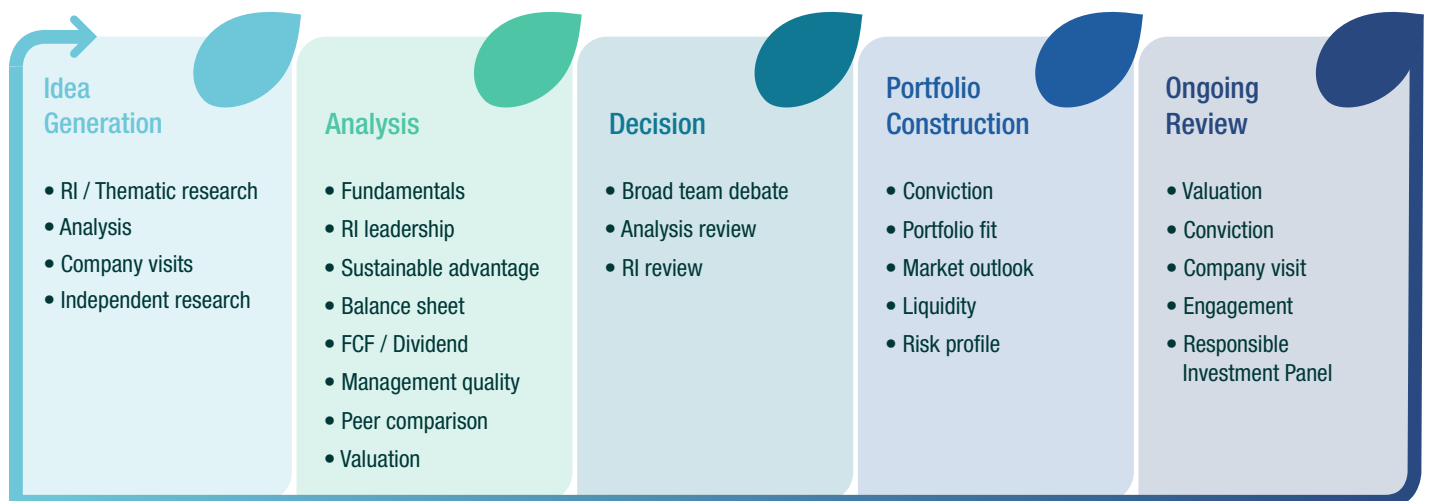
 As active managers, we seek to invest in a diversified mix of responsible and sustainably managed companies.

 We identify companies with strong balance sheets and superior cash flow generation, which are driven by proven business models at an attractive valuation.

 We aim to identify contrarian opportunities which typically focuses our attention away from large-cap companies.

 We seek to invest in companies for the long-term, minimising portfolio turnover and trading costs whilst also ensuring we actively vote and engage with management around key issues.

Process

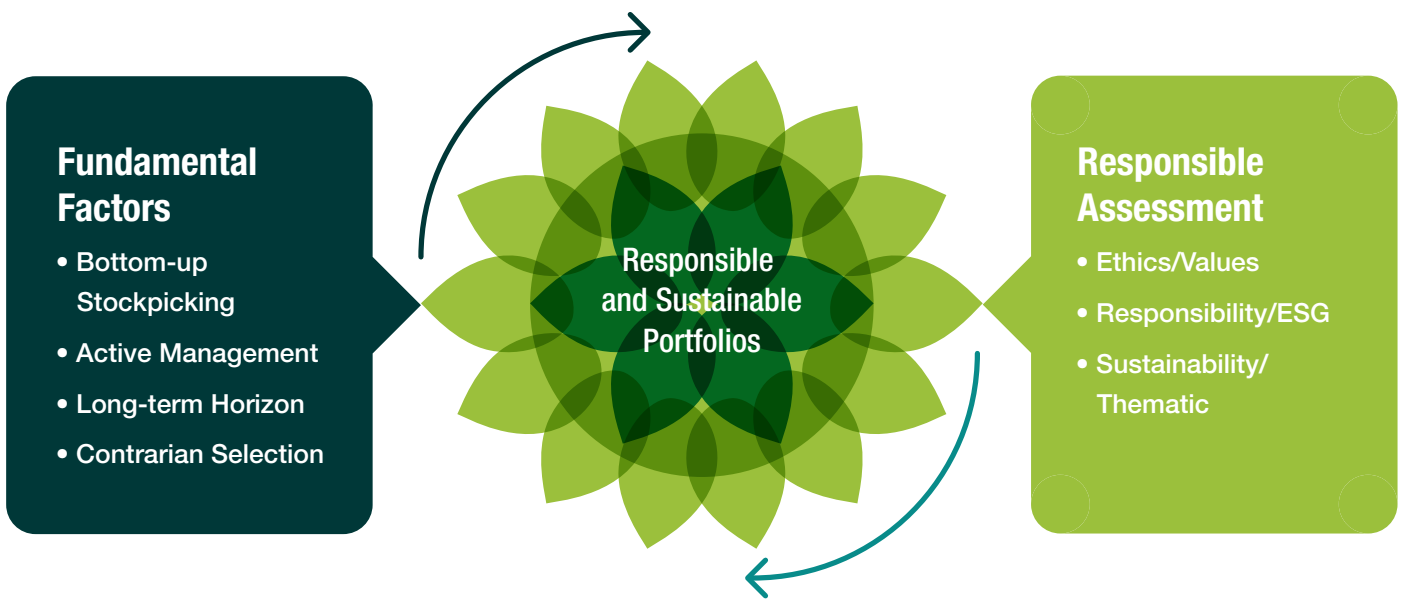


We are authentic

Our fund managers and responsible investment team work in tandem to deliver Performance with Principles.

We employ a process whereby Responsible and Sustainable factors are fully integrated into the investment management process, with our fund managers and responsible investment team working side by side to generate ideas, analyse opportunities, create meaningful and diversified portfolios and undertake ongoing evaluation.

At a stock level, we look for companies that have significant market share, strong cash-flows, good management, robust balance sheets, high levels of recurring revenues and high barriers to entry – in short, business models that can deliver regardless of the macro-economic and geo-political backdrop.

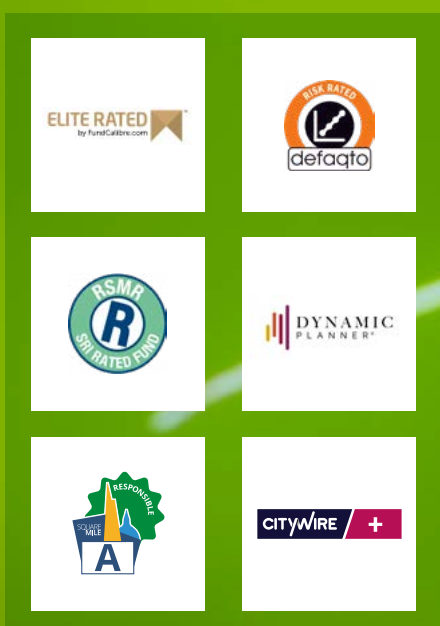


We are leading the way in Responsible and Sustainable investing

Our range of funds offers clients the chance to diversify across asset classes, regions and strategies, but with the central philosophy that achieving consistent, long-term returns is more important than capitalising on short-term market trends.



We are delighted that a number of our funds are rated by key industry partners.



We are the thought leaders

We fully integrate ESG risk factors across our investment process in order to deliver superior returns and add value for clients. This integrated approach covers four key areas: screening, engagement, governance and thought-leading research. It is a holistic approach, which we define as Responsible and Sustainable investing.

Screening

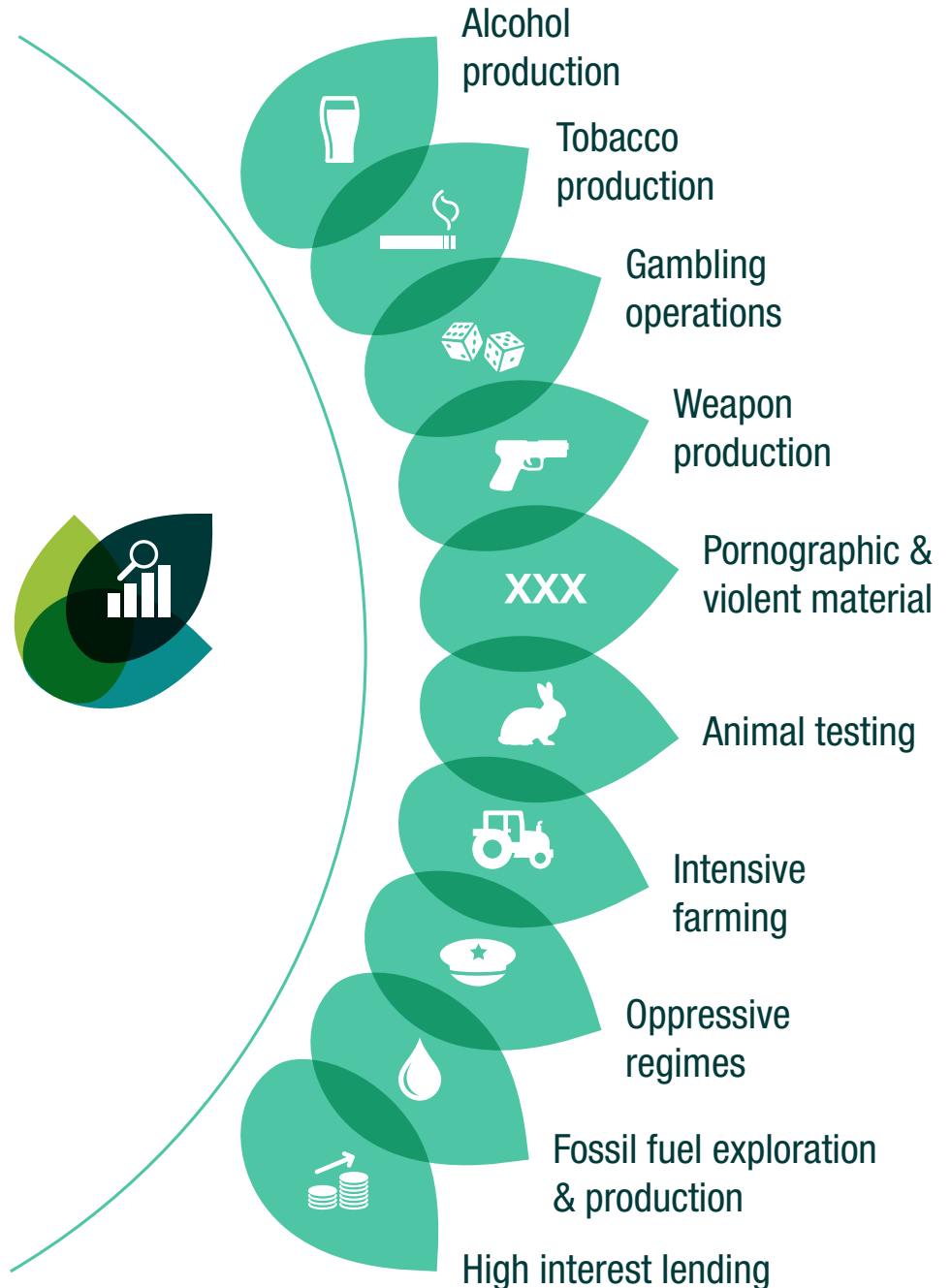
To be considered suitable for inclusion within our range of responsible and sustainably managed funds, an investment idea is assessed against our screening model. There are three parts to this: Ethics/Values, Responsibility/ESG and Sustainability/Thematic.

The 10 exclusion criteria which make up the Ethics/Values portion aim to avoid activities that are harmful to society. Companies that derive more than 10% of their profits or turnover from these activities are excluded from our universe of investible stocks.

We then integrate six areas of business risk (Responsibility/ESG), which are core to the way in which we consider stocks as being suitable for inclusion in our Responsible and Sustainable funds.

Finally, we look at companies from a Sustainability/Thematic angle. As we screen stock ideas, we consider the positive sustainability case in terms of products and solutions. This is a discretionary part of stock selection, as not all companies provide sustainable solutions.

Ethics/Values





Responsibility/ESG



Sustainability/Thematic



Responsible and Sustainable Equity and Bond Funds



Responsible and Sustainable European Equity Fund

The Fund seeks out undervalued equities across Europe, using a bottom-up stock picking approach in order to find good quality companies trading on attractive multiples with high dividend yields.

IA Sector **Europe ex UK**



Responsible and Sustainable UK Equity Fund

Launched in 1988, the fund was one of the first ethical funds available in the UK. It aims to preserve capital and avoid long term risk.

IA Sector **UK All Companies**



Responsible and Sustainable UK Equity Opportunities Fund

The Fund invests in UK companies that have leading positions in growing markets. The Fund maintains a small and mid-cap bias, capitalising on under-researched areas of the market in order to add alpha.

IA Sector **UK All Companies**



Responsible and Sustainable Global Equity Fund

The Fund invests globally in companies that have strong environmental and corporate governance policies and are looking to solve some of the world's biggest problems by adopting an innovative, sustainable approach.

IA Sector **Global**



Responsible and Sustainable Sterling Bond Fund

The Fund is run with a macro-economic focus on the UK economy and is predominantly invested in corporate bonds, but also UK gilts, preference shares and permanent interest-bearing securities, with a spread of durations.

IA Sector **£ Strategic Bond**



Responsible and Sustainable Short Dated Bond Fund

The Fund seeks to invest primarily in high quality bonds, those with an investment-grade credit rating of A or better, with a portfolio duration averaging around two years.

IA Sector **£ Corporate Bond**

Responsible and Sustainable Multi-Asset and Managed Income Funds

Our actively managed multi-asset funds feature a combination of equities, fixed income and alternative investments, such as real estate and infrastructure, to meet a range of different risk objectives and investment goals.



Responsible and Sustainable Cautious Multi-Asset Fund

The Fund invests in a mix of assets blended with a bias towards fixed interest securities. This aims to provide a lower level of risk relative to the other funds within the EdenTree Responsible & Sustainable Multi-Asset fund range.

IA Sector

Mixed Investment 20-60% Shares



Responsible and Sustainable Balanced Multi-Asset Fund

The Fund invests in a mix of assets that has a balance of equities and fixed interest securities. This aims to provide a moderate level of risk relative to the other funds within the EdenTree Responsible & Sustainable Multi-Asset fund range.

IA Sector

Mixed Investment 40-85% Shares



Responsible and Sustainable Growth Multi-Asset Fund

The Fund invests in a mix of assets blended with a bias towards equities. This aims to provide a higher level of risk relative to the other funds within the EdenTree Responsible & Sustainable Multi-Asset fund range.

IA Sector IA Sector

Mixed Investment 40-85% Shares



Responsible and Sustainable Managed Income Fund

The Fund invests in a mix of equities, fixed-interest securities and cash equivalents. It prioritises income together with capital growth over the longer term.

IA Sector

Mixed Investment 40-85% Shares



Fund Overview

The EdenTree Global Green Future Fund aims to provide long term capital growth over 5 years or more with an income by investing globally in companies which, at the core of their business, provide sustainable solutions to some of the world's environmental challenges.

Investment Focus:
Global All Countries

Investment Horizon:
Typically 5-7 years

Fund Style:
A mid-cap global equities bias with a blend of value and growth

Portfolio Construction:
40-60 holdings with an unconstrained approach

Benchmark comparator:
IA Global Sector and FTSE World TR

Green Future Fund

Managed by **Charlie Thomas**
and **Tom Fitzgerald**

It's time to invest in change for better

The transformation needed to address the world's most pressing environmental challenges will result in a seismic change to the way we live, the way we consume and the way companies operate. It will redefine business models, it will redefine economies and it will redefine innovation.

We call this critical time the Green Revolution and it has already commenced.

The EdenTree Green Future Fund aims to capture the long-term opportunities at the heart of the Green Revolution. It will do this by investing in the innovative companies that are providing solutions to the planet's environmental challenges.

The team believes this multi-trillion-dollar value creation opportunity will transcend sectors, geographies and market capitalisation, with the greatest opportunity set presiding in the small and mid-cap global equity universe.

The Fund's unconstrained, blended approach combines the best value and growth opportunities worldwide, with the core focus being on identifying those companies that provide the greatest upside potential over the long term, as well as delivering a positive environmental impact.

Global Impact Bond Fund

Managed by **David Katimbo-Mugwanya** and **Michael Sheehan**

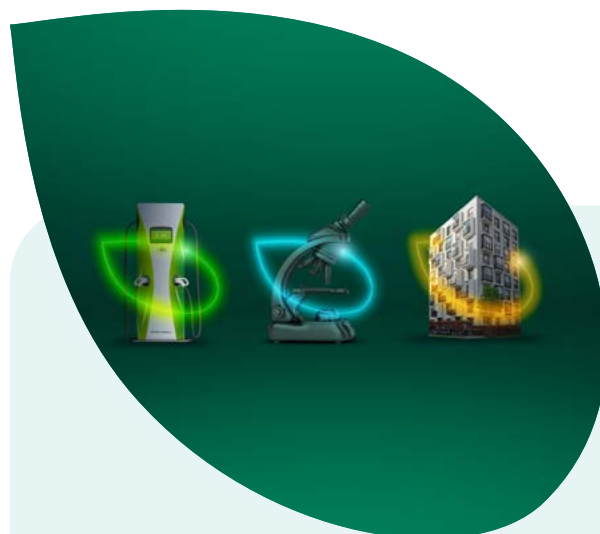
Delivering real world positive impact alongside financial returns

Impact investing is increasingly being seen as a key driver of sustainable investment. In order for the climate revolution to succeed and for the UN to achieve its 17 sustainable development goals, more private capital must be mobilised to top up the funding provided by governments and philanthropic organisations.

The EdenTree Global Impact Bond Fund seeks to achieve positive and social environmental impacts for our clients while also generating risk-adjusted performance.

To do this, the portfolio invests in a diverse mix of sustainable bonds worldwide. The team believe a global approach is essential as, currently, sterling-denominated bonds only represent 2% of the sustainable bond universe. Incorporating US dollar and euro-denominated instruments, as well as other currencies, will result in a broader portfolio that is not only diversified geographically but presents a wider array of impact opportunities including environmental, social and sustainability.

The team will predominantly invest in proceeds bonds. Companies and entities issuing proceeds bonds must be very clear about what they intend to do with the proceeds of the bonds prior to any investments being made. The team believes such bonds, which are clear, transparent and ring-fenced, can be more accurately monitored and tracked, meaning clients can be confident of achieving genuine impact from day one.



Fund Overview

The fund aims to invest in fixed income instruments with demonstrable positive environmental and social impact, while delivering competitive financial returns.

Investment Focus:

Global, Investment Grade, with minimum 80% exposure to impact instruments

Fund Style:

Flexible, Diversified

Distribution yield:

2.5% target, payable quarterly

Modified Duration range:

5 to 10 years

Average Credit rating:

BBB+

Benchmark:

iBoxx Global Green, Social & Sustainability Bonds Total Return Index (GBP Hedged)

Base Currency:

Sterling (currency hedged)



Fund Overview

The EdenTree Green Infrastructure Fund seeks to generate income with the potential for capital growth by investing in listed infrastructure-related companies, which demonstrate positive environmental outcomes.

Investment Focus:
Global Infrastructure

Investment Horizon:
3 years +

Fund Style:
Income orientated

Holdings:
Between 15 and 20, potentially increasing as the fund scales

Return target:
Regular income in excess of long term CPI, with the potential for capital growth

Performance references:
Investment Association Infrastructure Sector and CPI

Currency:
GBP

Green Infrastructure Fund

Managed by **Tommy Kristoffersen**

The foundation for a sustainable future

Infrastructure is crucial to the transition to a more sustainable world and listed infrastructure is a key part of the solution. A deepening pool of green infrastructure companies is providing alternative sources of income and growth for investors. Some estimates suggest building a low-carbon global economy will require over \$10 trillion of investment in new power capacity across solar, wind, and batteries between 2020 and 2050. Green infrastructure is at the forefront of that journey.

Why Green Infrastructure?

The fund offers access to real assets and projects that are making a difference.

 A sustainable future	 Inflation-mitigation	 Diversification
A growing role in the low-carbon energy transition	Exposure to inflation-linked income	A genuine alternative investment



Our Fund Managers



Charlie Thomas
Chief Investment Officer

Charlie joined EdenTree in June 2021 as CIO and has responsibility for the Investment Team. Charlie is also Co-Manager of the EdenTree Green Future Fund,

launched in 2022 and has more than two decades of investment management experience to the firm, most recently, as Head of Strategy, Environment and Sustainability at Jupiter Asset Management where he also managed the Jupiter Ecology Fund for nearly two decades. Charlie holds a masters in Environmental Technology from Imperial College London.



Greg Herbert
Head of UK Equities

Greg Herbert is Head of UK Equities at EdenTree. He joined the firm in 2022 and is the lead Fund Manager on the EdenTree Responsible & Sustainable Managed Income Fund

and the EdenTree Responsible & Sustainable UK Equity Fund. He started his career at State Street Global Advisors before moving to Jupiter Asset Management in 2005. Over his career, Greg has managed pan-European, North American and Global equity products. Greg holds an MSc in Investment Management from Bayes Business School at City University and a BA (Hons) in Modern Languages from Bristol University.



Philip Harris
Fund Manager

Phil is the lead Fund Manager on the Edentree Responsible & Sustainable UK Opportunities Fund. Phil has over 30 years' experience in fund management in UK equities

across a wide range of products from OEIC's, pensions funds and LLP's. Phil started his career at Albert E Sharp in Birmingham as a Private Client Executive and Analyst before working on their small companies and UK general funds. Subsequently he worked at Threadneedle and Credit Suisse. At Hermes and RWC he helped launch pioneering activist and shareholder engagement funds before coming to EdenTree.



Chris Hiorns
Head of Multi-Asset and European Equities

Chris Hiorns joined EdenTree in 1996 as a Graduate Trainee and Investment Analyst, and has been running responsible and sustainable money since

2008. Chris is EdenTree's Head of Multi-Asset and European Equities and is the lead Fund Manager on multiple EdenTree strategies including the EdenTree Responsible and Sustainable European Equity Fund and the Multi-Asset range of funds. Chris holds an MSc in Economics from University College London and is a CFA Charterholder.



David Osfield
Fund Manager

David joined EdenTree in 2016 and leads management of the EdenTree Responsible & Sustainable Global Equity Fund, including leading EdenTree's "Sustainable Global Equities for a Just

Transition" segregated strategies, reflecting his strong advocacy and passion for sustainable and responsible investment. He began his career at Alliance Trust in 2002, where he focused on Global, Asian and European equities, latterly working with the Sustainable Futures Team. David has been a CFA Charterholder since 2007, and has a 1st class BA (Hons) in Business Finance from Durham University.



Thomas Fitzgerald
Fund Manager

Tom joined EdenTree in 2011 and has been Co-manager of the EdenTree Responsible & Sustainable Global Equity Fund since August 2018 and also co-manages the Green Future Fund, as

well as the firm's "Sustainable Global Equities for a Just Transition" segregated strategies. He initially joined the Investment Team as a Research Analyst where his primary responsibilities centred on global equity analysis, focusing in particular on the global Technology sector. Tom graduated with a BSc (Hons) in Economics and Business Management from Oxford Brookes University and holds the Investment Management Certificate (IMC) and the CFA Certificate in ESG Investing.



Robin Hepworth
Senior Fund Manager

Rob started his career with EdenTree as an Analyst in 1988. He ran the Managed Income and Global Equity Funds from launch, while co-managing the Sterling Bond Fund. Robin was

also CIO at EdenTree until 2021, and remains with EdenTree in an investment capacity managing its direct property holdings.



David Katimbo-Mugwanya
Head of Fixed Income

David leads on EdenTree's Responsible & Sustainable fixed income strategies, including the Sterling Bond, the Short Dated Bond and the Global Impact Bond Funds.

David joined EdenTree in 2015 and possesses over a decade of investment expertise across sovereigns, corporate debt and money markets. His previous experience at Epworth Investment Management saw him managing fixed income portfolios via designated mandates as well as bespoke solutions. Along with a BSc. Economics degree from the University of Essex, David is a CFA Charterholder. David is a member of the London Stock Exchange's Primary Markets Group, an advisory group to the LSE on all matters affecting primary capital markets.



Tommy Kristoffersen
Fund Manager

Tommy joined EdenTree in 2021 and manages the EdenTree Green Infrastructure Fund. He also assists with the management of other funds within the Multi Asset Strategies & European

Equities ranges. Prior to EdenTree, Tommy worked at JP Morgan and Jupiter Asset Management, most recently within Jupiter's Alternatives business. Tommy holds the Investment Management Certificate (IMC), and is studying towards the FMVA certification from the Corporate Finance Institute.



Michael Sheehan
Fund Manager

Michael joined the EdenTree Fixed Income Team in 2021 and is responsible for co-managing EdenTree's Responsible & Sustainable fixed income strategies, including the EdenTree

Global Impact Bond Fund. He is also Co-manager of the Responsible & Sustainable Managed Income Fund. Michael Joined from Aberdeen Standard where he assisted in managing European investment grade credit funds. Michael is a CFA Charterholder and also holds the CFA Certificate in ESG investing. He holds a BA (Hons) in Economics from the University of Reading.

Our Responsible Investment Team

Our fund managers and responsible investment team work in parallel to deliver Performance with Principles. We employ a process whereby Responsible and Sustainable factors are fully integrated into the investment management process, with our fund managers and responsible investment team working side by side to generate ideas, analyse opportunities, create meaningful and diversified portfolios and undertake ongoing evaluation.



Neville White
Head of Responsible Investment Policy and Research

Neville is responsible for RI policy and research and leads on global corporate governance proxy voting and engagement with business around environmental, social and governance issues. He previously managed socially responsible investment for a number of church and charity investment managers.



Carlota Esguevillas
Senior Responsible Investment Analyst

Carlota holds a BA in Geography from Oxford University and previously worked for a sustainability consultancy advising businesses on their sustainability strategies and disclosures. She leads EdenTree's work on social topics such as human rights, diversity and workforce issues. Carlota holds the Investment Management Certificate.



Amelia Gaston
Responsible Investment Analyst

Amelia holds a BA in Geography from Durham University and previously worked as a responsible investment analyst at LGPS Central, one of the UK Pension Pools. Millie holds the Investment Management Certificate and CFA Certificate in ESG Investing. She leads EdenTree's work on climate and environmental issues.



Cordelia Dower-Tylee
Responsible Investment Analyst

Cordelia holds an MA in History from the University of Edinburgh, and a Certificate in Sustainable Finance from the University of Cambridge. She has previously worked with the International Water Management Institute and has experience in a green focused corporate advisory firm.

RESPONSIBLE INVESTMENT ADVISORY PANEL

Our Responsible and Sustainable Investment process is overseen by an independent Panel. The Panel meets three times a year and may advise and inform but not mandate a course of action. The Panel is made up of independent experts appointed for their knowledge and expertise.



Rt Rev Dr Nigel Peyton
Panel Chair



Sue Round
Deputy Chair



Julie McDowell
Independent Consultant



Julian Parrott
Client Member, Ethical Futures



Bill Seddon
Former CEO CFB Methodist Church



Mike Barry
Former Director of Sustainable Business at Marks & Spencer



Annette Fergusson
Independent Consultant



Paul Simpson (OBE)
Strategic Advisor

We are committed to better

RESEARCH AND GOVERNANCE

At every stage of our Responsible and Sustainable approach, we work with a number of partners to support our investment process. This includes analytical tools that provide ESG insight into companies and our funds, and investor coalitions and that aim to help us, as part of the investment industry, collectively tackle some of the biggest challenges for our society and environment. **Some of our commitments include:**



THE PRINCIPLES FOR RESPONSIBLE INVESTMENT (PRI)

The UN Principles for Responsible Investment supports its international network of investor signatories in incorporating ESG factors into their investment and ownership strategies.



CDP

The Carbon Disclosure Project manages the global disclosure system that enables companies to measure and manage their environmental impact.



THE UK STEWARDSHIP CODE

The UK Stewardship Code aims to enhance the quality of engagement between investors and companies.



PRI MONTREAL PLEDGE

The Montreal Pledge is a voluntary commitment by investors annually to measure and publicly report on the emissions they finance in their portfolios.



IIGCC (INSTITUTIONAL INVESTORS GROUP ON CLIMATE CHANGE)

The Institutional Investor Group on Climate Change is a network of European investors aimed at encouraging public policies, investment practices and corporate behaviour that addresses the long-term risks of climate change.



FAIRR

The Farm Animal Investment Risk & Return investor initiative is focused on the potential investment risks arising from intensive livestock farming and poor animal welfare standards.



THE 30% CLUB

The 30% Club investor group aims to improve gender diversity with a goal of achieving a minimum of 30% women on FTSE100 boards.



THE WORKFORCE DISCLOSURE INITIATIVE

The Workforce Disclosure Initiative seeks to assess corporate transparency on how companies manage workforce issues, aiming to improve the overall quality of jobs in the direct operations and supply chains of multinational companies.



THE WORLD BENCHMARKING ALLIANCE

The World Benchmarking Alliance has developed a series of benchmarks assessing 2,000 of the world's most influential companies, ranking and measuring them on their contributions to the SDGs.



THE ACCESS TO MEDICINE INDEX

The Access to Medicine Index ranks pharmaceutical and healthcare companies on how they make medicines, vaccines and diagnostics more accessible in low and middle-income countries. EdenTree has been a supporter since its inception.



Charity Experts

We are an investment management firm with our own charitable heritage. We help charities and non-profit organisations of all shapes and sizes, doing vital work across the UK for the greater good of society, make the most of their reserves by investing with us to achieve Performance with principles.

Our unique ownership gives us a deep understanding of the charity sector – we are a part of the Benefact Group, who are owned by Benefact Trust, one of the UK’s largest grant-making charities.

We provide our charity clients with a service beyond meeting their financial objectives – we help them to understand changing charity sector regulation and believe that strong communication with our clients is the key to success.

We have a dedicated charities team on hand to help serve our clients at every stage; from the initial scoping of requirements through to day-to-day account management queries. Personalised and detailed reporting of investments is provided to charity clients on a quarterly basis.

BENEFACT GROUP

We are proud to be part of the Benefact Group a diverse family of specialist financial services businesses, driven by our shared ambition to do right by our customers and clients, and united by a common purpose to give all available profits to charity and good causes. We’re built on the idea that better business can better lives.

BENEFACT TRUST

Being owned by a charity – Benefact Trust – places good intentions at the foundations of our Group. Whether in specialist insurance, investment management, broking or advisory, every business that makes up the Benefact Group is a specialist in their respective field. Together we provide Responsible and Sustainable investment, protection of iconic buildings and world heritage sites, and trusted advice to people and businesses.

Our partnership with Alice Dearing, team GB Olympic swimmer Tokyo 2021

Just as we have been pioneers in the delivery of Responsible and Sustainable investment opportunities, Alice has been demonstrating her pioneering spirit in the world of open water swimming and became the first black woman to represent Team GB in the sport.

Open water swimming is an endurance event – it is the equivalent of the marathon for runners. To achieve at this event, not only do you need momentum, great rhythm and tactical intelligence, but you also face challenging sea conditions, which can be volatile and changeable.

We see a great many parallels between the challenges of open water swimming and the often uncertain world of investment. Like Alice, we are focused on endurance and are proud of our 30 year track record in delivering exceptional, long-term results for our clients regardless of the market environment.

Our connection with Alice is about more than just elite performance, Alice's swimming performance can be heavily affected by marine pollution and degradation, a key area in which we look to engage companies as part of our investment process.

Our collaboration resonates through our shared passion to engage and create change for our community and the environment, as well as to deliver performance with principles. Her determination to break boundaries within her sport and her inspiring work outside the swimming arena align with our commitment to engagement, inclusion and diversity. Alice, like us, is striving to make the world a better place.



I want to look back at my career and know that I did everything I could to operate with purpose – not just in my performances and my dedication to training, but also my alliance with important causes.

It's easy to go with the flow, but finding ways to make a positive difference is how the world improves.

Together with EdenTree, I want to put some really important ideas into action; ideas that can help the next generation live in a more inclusive, diverse and financially literate world.

Senior Management



Andy Clark

Chief Executive Officer

Andy Clark brings more than two decades of investment management experience to EdenTree, along with a deep knowledge of product and distribution. Prior to joining EdenTree, Andy was CEO at HSBC Global Asset Management (UK) for eight years. Prior to holding the role of CEO, Andy was Head of EMEA Wholesale Business at the firm. Andy was previously CEO and Head of Retail Distribution at DWS Investments and worked as UK Sales Director for Fidelity International.



Charlie Thomas

Chief Investment Officer

Charlie joined EdenTree in June 2021 as CIO and has responsibility for the Investment Team. Charlie is also Co-Manager of the EdenTree Green Future Fund, launched in 2022 and has more than two decades of investment management experience to the firm, most recently, as Head of Strategy, Environment and Sustainability at Jupiter Asset Management where he also managed the Jupiter Ecology Fund for nearly two decades. Charlie holds a Masters in Environmental Technology from Imperial College London.



Jo Brown

Chief Financial Officer

Jo joined EdenTree in January 2020, and is responsible for Finance and Compliance. She brings 12 years of asset management finance experience from M&G, where she held various roles including Director of Finance Operations and Group Financial Controller. Her regulatory background stretches back to her audit training and she has over 20 years of experience in Regulatory Capital and Client Assets regulations.



Angus Schumacher

Chief Operating Officer

Angus is responsible for managing and developing the scalable, risk-controlled operating model across the firm. Angus leads the Operations Team, and has responsibility for risk management at EdenTree. Angus joined EdenTree in September 2018, and prior to this, had two decades of experience in transformation, operational management, and front office roles in global investment management firms. Angus has an MBA from the University of Edinburgh.



Daniel Barber

Chief Commercial Officer

Daniel has been with EdenTree since 2009, having started his career in asset management at Mercury Asset Management in 1998. His role at EdenTree involves managing the commercial activities and opportunities available to the business, whilst maintaining control of the strategic priorities.

Additionally, Daniel has responsibility for all marketing and brand activities, including product development and management. He has oversight of and provides strategic direction on all media, press and digital communications.



Philip Baker

Head of Distribution

Philip has over 20 years' experience in asset management, working across distribution and focussed on responsible investment. Philip leads EdenTree's Distribution Team, who deliver our responsible & sustainable investment solutions and services to investment professionals, charities and other institutions. Philip joined EdenTree in 2009, from Fidelity International, where he worked within sales, marketing and operations, both with market leading investment platform FundsNetwork and Fidelity's pioneering Investment Solutions Group.



Vaida Gapsyte

Senior HR Business Partner

Vaida joined EdenTree in 2021 as Senior HR Business Partner, and is responsible for all HR activities at EdenTree. Prior to joining EdenTree, Vaida worked as HR Manager for international private investment and asset management firms. Vaida holds a BAsc in Psychology.



Performance
with principles®

Contact us

For additional information on EdenTree and to find out more about what our range of funds can deliver for you and your clients, please get in touch with us at:



08000 321 893



ifa@edentreeim.com



edentreeim.com



BENEFACT GROUP

The value of an investment and the income from it can fall as well as rise as a result of market and currency fluctuations, and you may not get back the amount originally invested. Past performance should not be seen as a guide to future performance. If you are unsure which investment is most suited for you, the advice of a qualified financial adviser should be sought. EdenTree Investment Management Limited (EdenTree) Reg. No. 2519319. Registered in England at Benefact House, 2000, Pioneer Avenue, Gloucester Business Park, Brockworth, Gloucester, GL3 4AW, United Kingdom. EdenTree is authorised and regulated by the Financial Conduct Authority and is a member of the Investment Association. Firm Reference Number 527473. MKT000180 11/23.